

Ilangussaaq 1: Timmissat Kalaallit Nunaanni piffissamik killilimmik piniarfigineqarsinnaasut, taamalu tamakkiisumik eqqissisimatitaanngitsut.

Timmissat Nunamiutat

<i>Corvus corax</i>	Tulugaq	Ravn
<i>Lagopus mutus</i>	Aqisseq	Fjeldrype

Timmissat naluutillit/imarmiut

Naajat assigisaaallu

<i>Larus glaucoides</i>	Naajaannaq	Hvidvinget måge
<i>Larus hyperboreus</i>	Naajarujsuaq	Gråmåge
<i>Larus marinus</i>	Naajarluk	Svartbag
<i>Rissa tridactyla</i>	Taateraag	Ride
<i>Fulmarus glacialis</i>	Qaqulluk	Malleuk

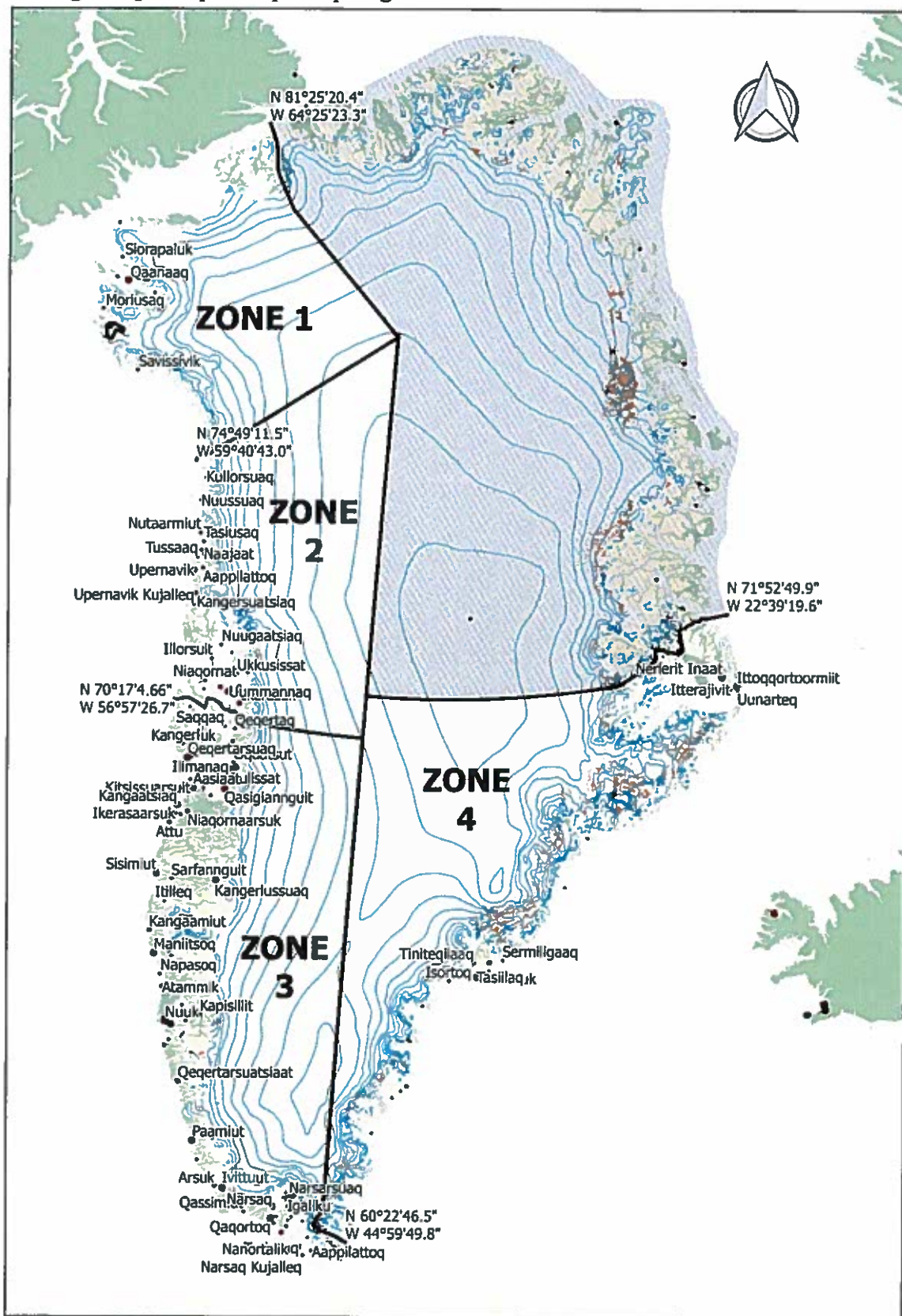
Qeerlutuut

<i>Somateria mollissima</i>	Miteq siorartooq	Edderfugl
<i>Somateria spectabilis</i>	Miteq siorakitsoq	Kongeedderfugl
<i>Clangula hyemalis</i>	Alleq	Havlit
<i>Anas platyrhynchos</i>	Qeerlutooq	Gråand
<i>Anser brachyrhynchus</i>	Nerleq siggukitsoq	Kortnæbbet gås
<i>Anser caerulescens</i>	Kangoq	Snegås
<i>Branta canadensis</i>	Nerlernaarsuk	Canadagås
<i>Branta leucopsis</i>	Nerlernarnaq	Bramgås

Allat

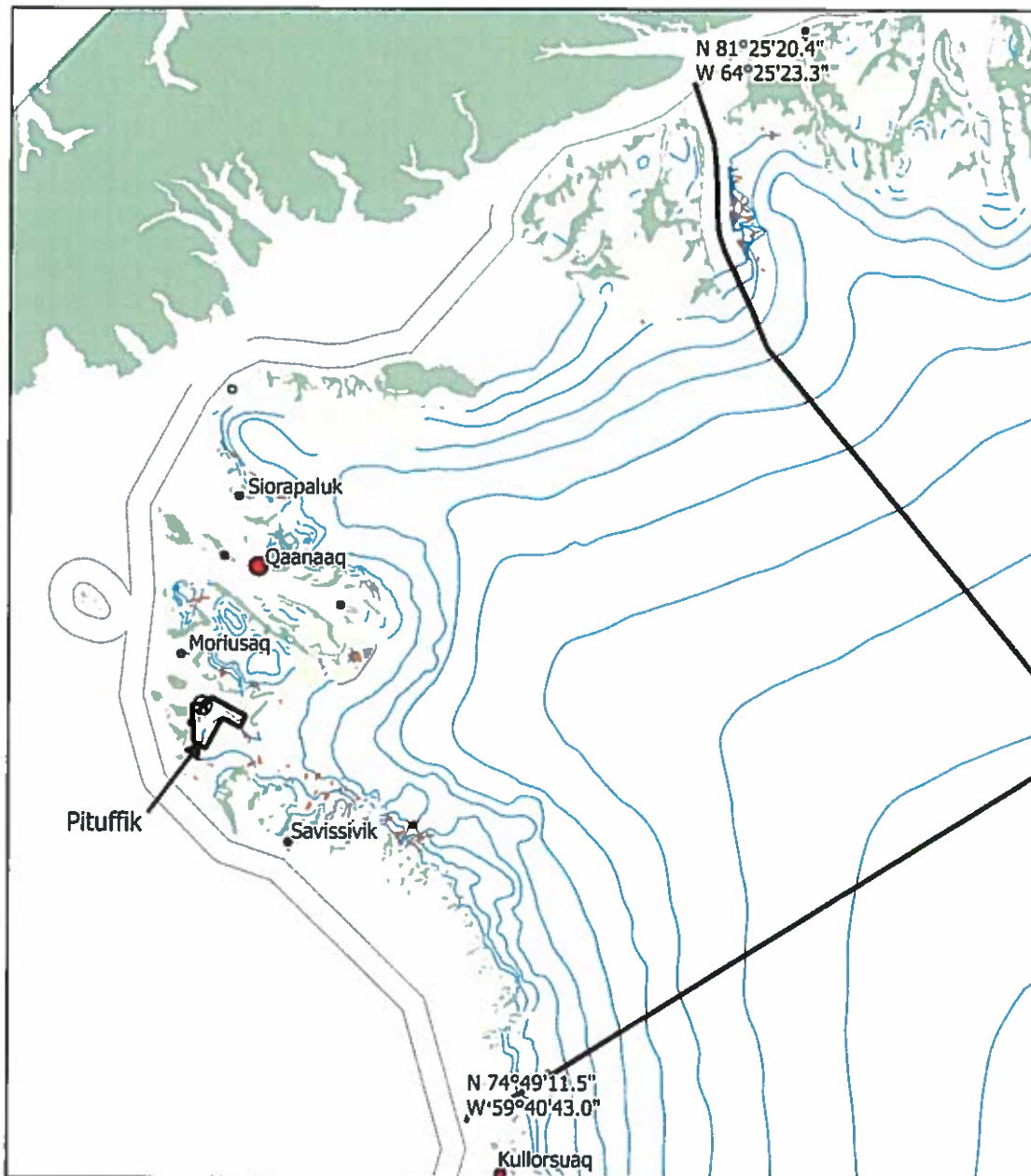
<i>Uria lomvia</i>	Appa	Polarlomvie
<i>Uria aalge</i>	Appa sigguttooq	Atlantisk lomvie
<i>Cephus grylle</i>	Serfaq	Tejst
<i>Alle alle</i>	Appaliarsuk/Appaaraq	Søkonge
<i>Gavia immer</i>	Tuullik	Islom
<i>Phalacrocorax carbo</i>	Oqaatsoq	Skarv

Ilannugsaq 2: Aqtsiveqarfiit pillugu allattorsimaffik



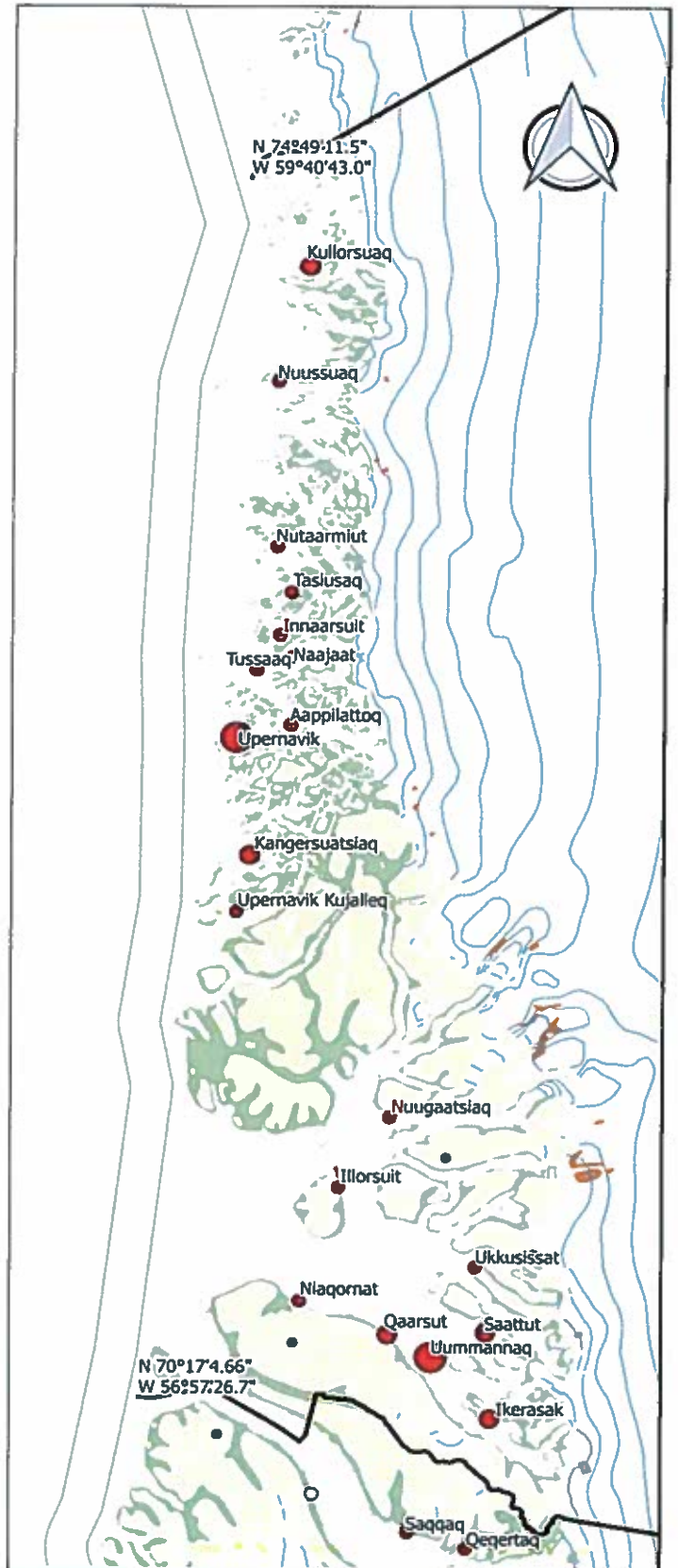
Ilannugsaq 3: Aqutsiveqarfik nunap immikkoortua zone 1

Zone 1 avannamut Petermann Fjord-imut killeqarpoq naleraq Avannarpassuseq N 81°25'20.4" Kippasissuseq V 64°25'23.3" kujammullu Hammer Ø-mut killeqarluni Avannarpassuseq N 74°49'11.5" Kippasissuseq V 59°40'43.0"-imi.



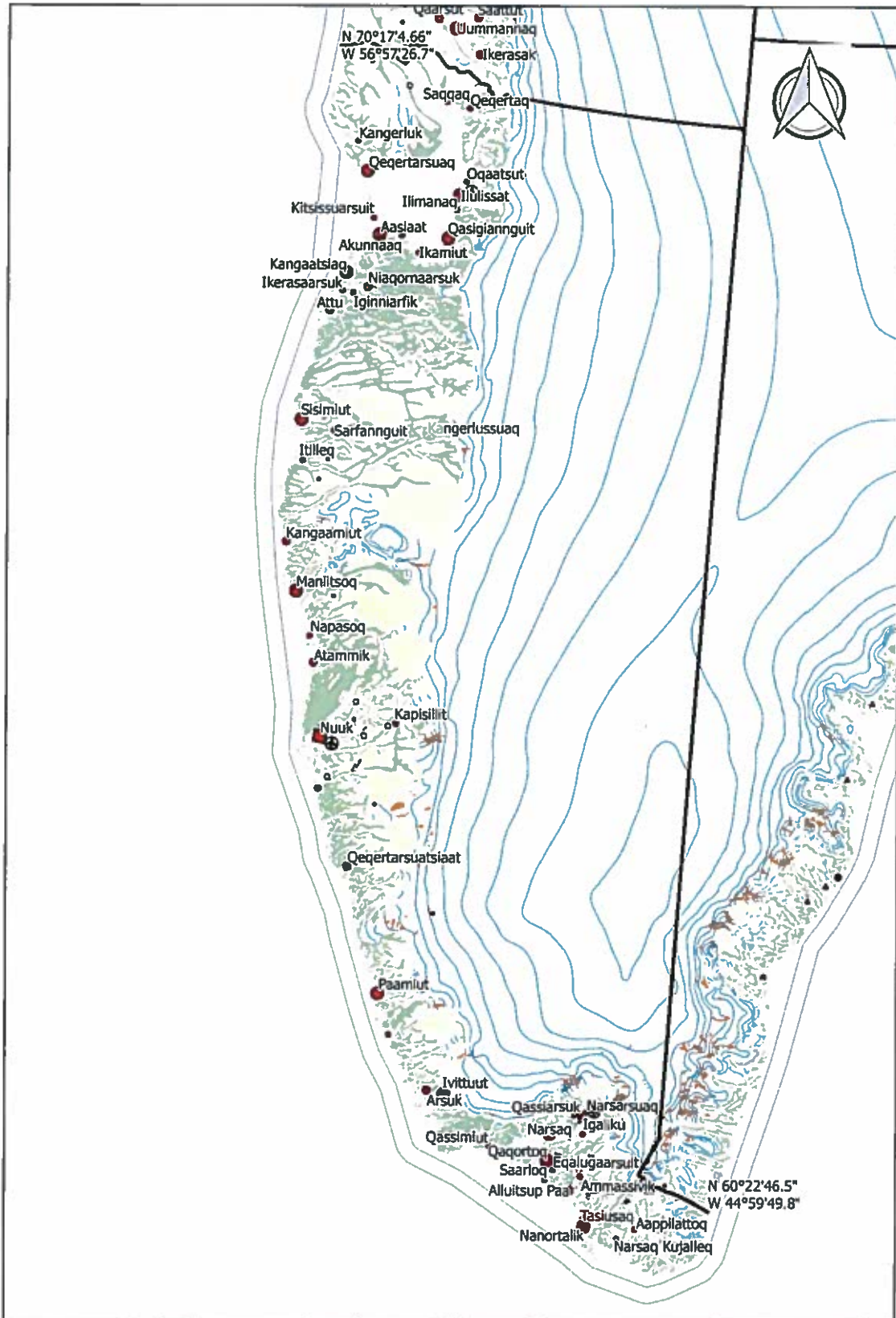
Ilanngussaq 4. Aqutsiveqarfik nunap immikkoortua zone 2

Avannamut killeqarfia aqutsiveqarfik zone 2-p kujammut killeqarfia malittaraa Hammer Ø-p nalaani naleraq Avannarpasissuseq N 74°49'11.5" Kippasissuseq V 59°40'43.0". Kujammut Maligaat nalaani killeqarpoq Avannarpasissuseq N 70°17'4.66" Kippasissuseq V 56°57'26.7"



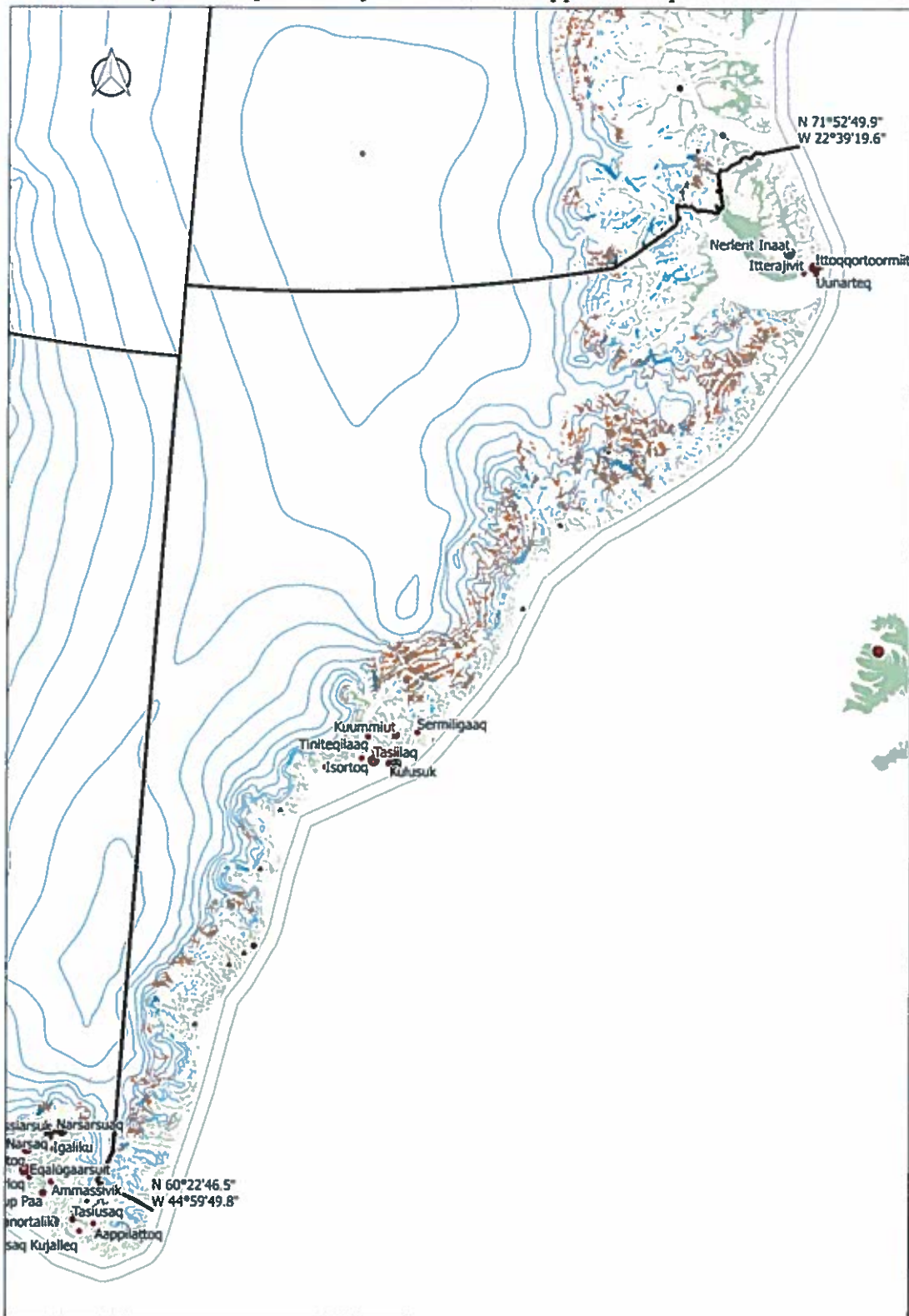
Ilannugsaq 5 Aqutsiveqarfik nunap immikkoortua zone 3

Avannamut killeqarfia zone 2-p kujammut killeqarfia malillugu Maligaat nalaani naleraq Avannarpasissuseq N 70°17'4.66" V 56°57'26.7". Kujammut killeqarfiaa Kanajoortuut nalaani naleraq Avannarpasissuseq N 60°22'46.5 Kippasissuseq V 44°59'49.8".



Ilanngussaq 6 Aqutsiveqarfik nunap immikkoortua zone 4

Kujammut killeqarfia aqutsiveqarfik 3-mi killeqarfik malillugu Kanajoorartuut nalaani naleraq Avannarpasissuseq N 70°17'4.66" Kippasissuseq V 56°57'26.7". Avannamut killeqarfiaa Kap Biot-i naleraq Avannarpasissuseq N 71°52'49.9 Kippasissuseq V 22°39'19.6".



Ilanngussaq 7: Timmissat illersugaaffisa sumiiffii pillugit allattorsimaffik

Aqutsiveqarfik	Kalaallisut atia	Allatut atia	Timmissat piaqqiorfiata normua timmissat naluutillit pillugit nalunaarsuiffimmi nalunaarsuineq naapertorlugu	GPS-ip naleraa
Avanersuaq	Lion Øer	Lion Øer	77001	N 77,4864; W 66,6896
Qaanaaq	Apparsuit	Hakluyt Ø	77002	N 77,4409; W 72,6777
Qaanaaq	Appat	Saunders Ø	76014	N 76,5779; W 70,0382
Qaanaaq	Issuvisuup Appai	Parker Snow Bugt	76013	N 76,1579; W 68,684
Qaanaaq	Appat Appai		76012	N 76,0854; W 68,369
Qaanaaq	Kitsissut	Carey Øer	76007, 08, 09, 11 og 15	N 76,7337; W 73,0527
Qaanaaq	Saattut	Sabine Øer	75001	N 75,294; W 60,132
Upernavik	Kitsissorsuit	Edderfugleøer	74001, 74002 og 74003	N 74,043; W 57,773
Upernavik	Kitsissut		73001	N 73,116; W 56,440
Upernavik	Uigorluk	Lilleflad Ø	72040	N 72,3076; W 55,9161
Upernavik	Nunanguit	Smålandene	72030, 72132, 72133, 72134	N 74,043; W 57,773
Upernavik	Kingittoq		72014	N 72,6552; W 55,8845
Upernavik	Kuup Apparsui	Kap Schackleton	73010	N 73,7938; W 56,8158
Upernavik	Kippaku Apparsui	Kippaku	73009	N 73,7196; W 56,6317

Upernavik	Issortusooq		72015		N 72,247; W 55,698
Upernavik	Timmiakulussuit		72011		N 72,6639; W 55,7551
Uummannaaq	Qeqertat	Schades øer	71043, 71044, 71053, 71078 og 71079		N 71,39; W 53,84
Ilulissat	Innaq	Ritenbenk	69049		N 69,8074; W 51,3727
Ilulissat	Naajaat		69033		N 69,9669; W 51,1675
Qeqertarsuaq	Assissut	Brændevinskær	69001		N 69,0638; W 53,5169
Aasiaat	Niaqornaq, Innarsu- atsiaaq og Basis Ø	Grønne Ejland	68244, 68245, 68247		N 68,8461; W 51,9469
Aasiaat	Saattuarsuit		68030		N 68,8653; W 53,0917
Aasiaat	Nunatsiaq	Rotten	68010		N 68,8639; W 53,4168
Kangaatsiaq/ Qasianniuguit	Tasiusarsuaq		68078-68082, 68100-68102, 68161, 69162, 68164, 68179-68186		N 68,38; W 51,33
Kangaatsiaq			67103		N 67,9945; W -53,7986
Manitsoq	Taateraaf		65019		N 65,9969; W -52,546
Manitsoq	Sermilinnuaq		65015		N 65,6606; W 52,6464
Manitsoq	Sermilinnuaq		65013		N 65,6734; W 52,598
Manitsoq	Innarsuaq	Isortoq	65003		N 65,4586; W 52,1368

Nuuk	Qeqertannguit		64035		N 64,5033; W 51,3333
Nuuk	Innajuattoq		64019		N 64,733; W 50,6917
Nuuk	Nunngarusuit		63010		N 63,7647; W 51,7269
Paamiut	Taateraarunnerit	Fox Faldet	61002		N 61,3264; W 48,0029
Qaqortoq		Indre Kitsissut	60030		N 60,8667; W 48,3833
Qaqortoq	Kitsissut Avalliit	Ydre Kitsissut	60012		N 60,7561; W 48,4253
Nanortalik	Qeqertat		59004		N 59,8898; W 43,4649
Ittoqqortoormiit	Kangikajik	Kap Brewster	70508		N 70,1525; W 22,0656
Ittoqqortoormiit	Appalik	Raffles Ø	70505		N 70,5973; W 21,5066
Nationalparken	Nuna allanngutsaa- liugaq	Sandøen	74501		N 74,2670; W 20,1501
Nationalparken	Nuna allanngutsaa- liugaq	Prinsesse Margre- the Ø	81502, 003, 004, 016, 017		N 81,0215; W 13,1725

Ilanngussaq 8: Sumiiffiit timmissanik illersuiffiit nunap assinga allattorsimaffik

